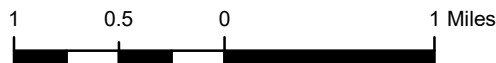
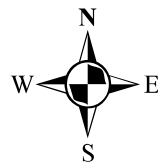


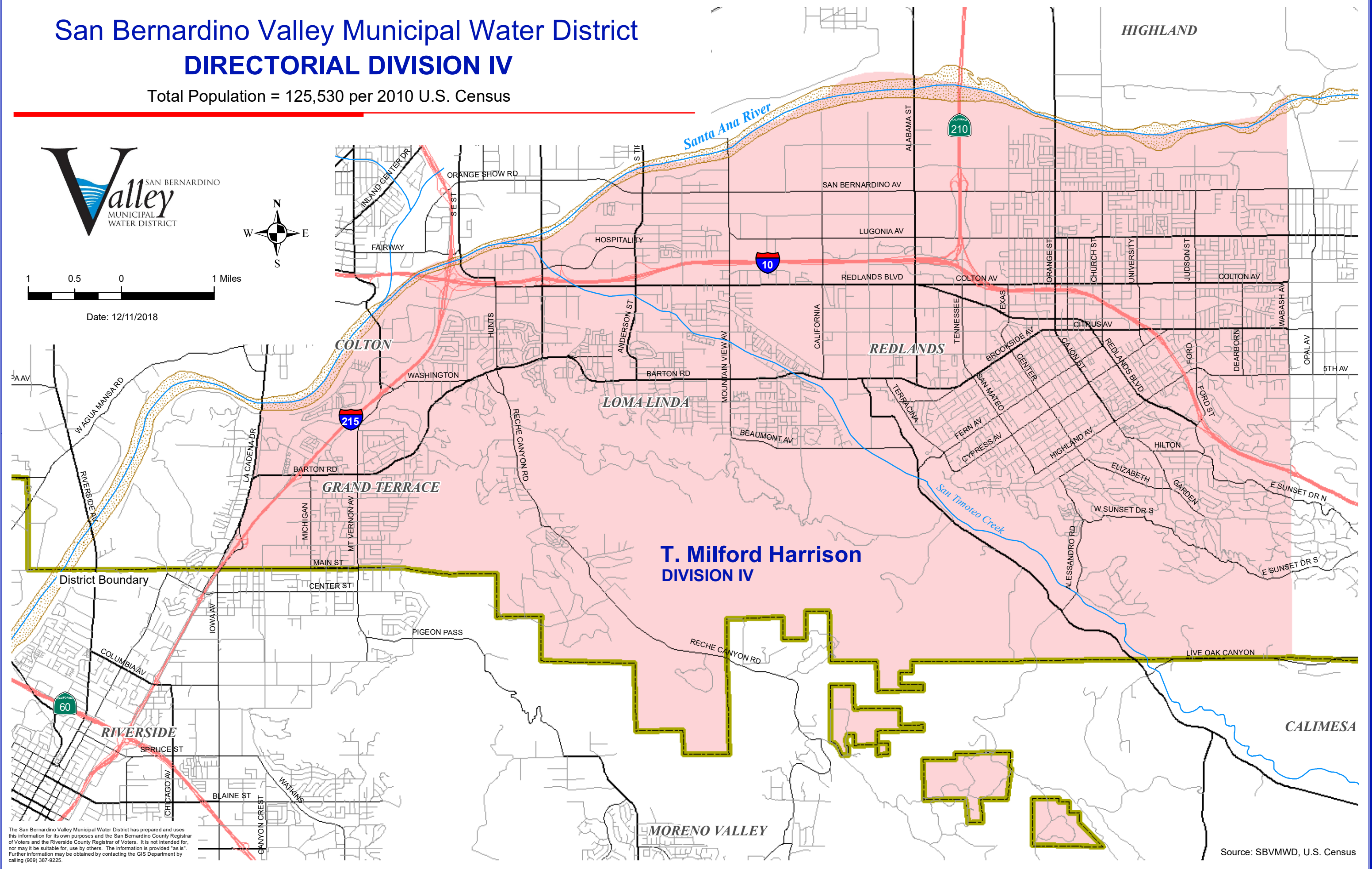
San Bernardino Valley Municipal Water District

DIRECTORIAL DIVISION IV

Total Population = 125,530 per 2010 U.S. Census



Date: 12/11/2018



T. Milford Harrison
DIVISION IV

The San Bernardino Valley Municipal Water District has prepared and uses this information for its own purposes and the San Bernardino County Registrar of Voters and the Riverside County Registrar of Voters. It is not intended for, nor may it be suitable for, use by others. The information is provided "as is". Further information may be obtained by contacting the GIS Department by calling (909) 387-9225.

Source: SBVMWD, U.S. Census

Path: Y:\Divisions\Division4.mxd