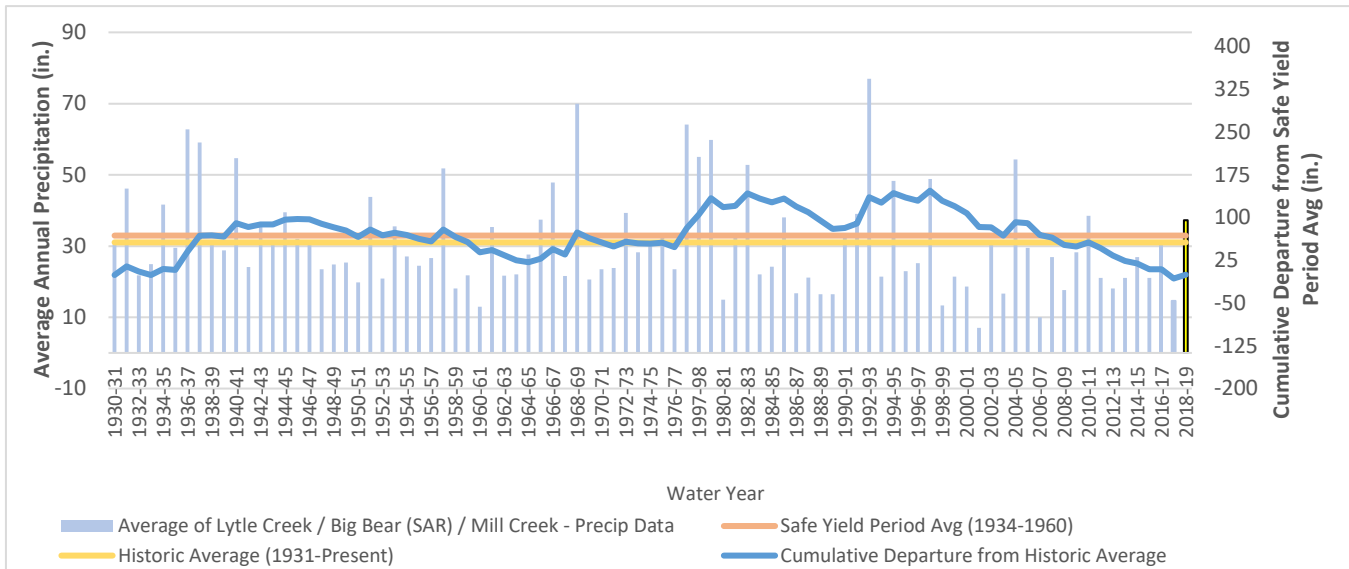


2019 Regional Water Management Plan

June

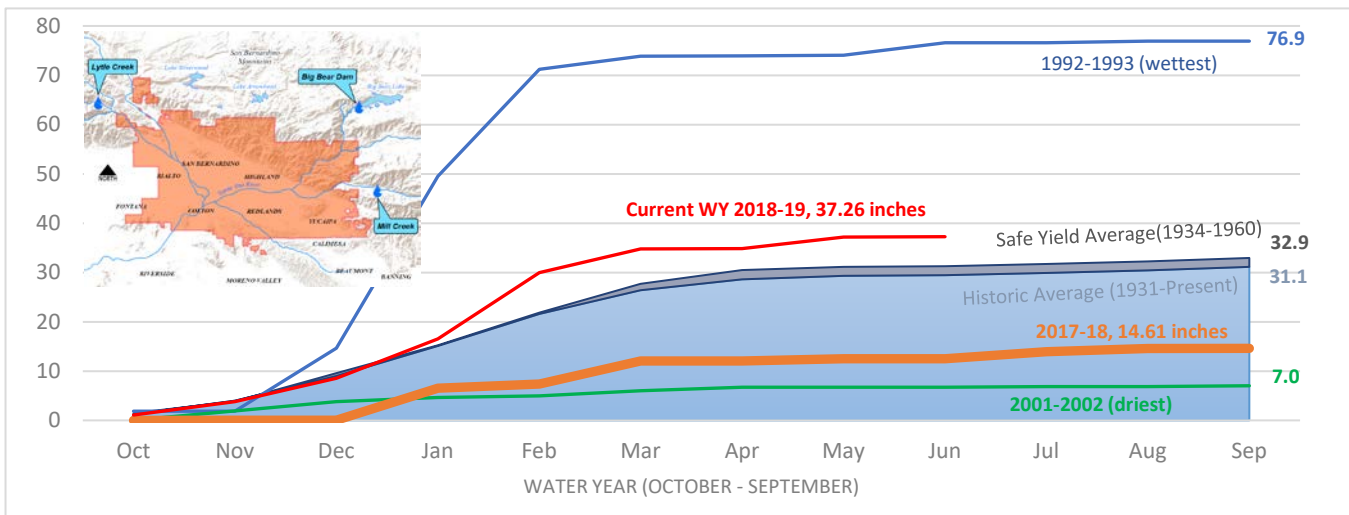
SBBA THREE STATION PRECIPITATION INDEX - CUMULATIVE DEPARTURE FROM THE MEAN

Above Average



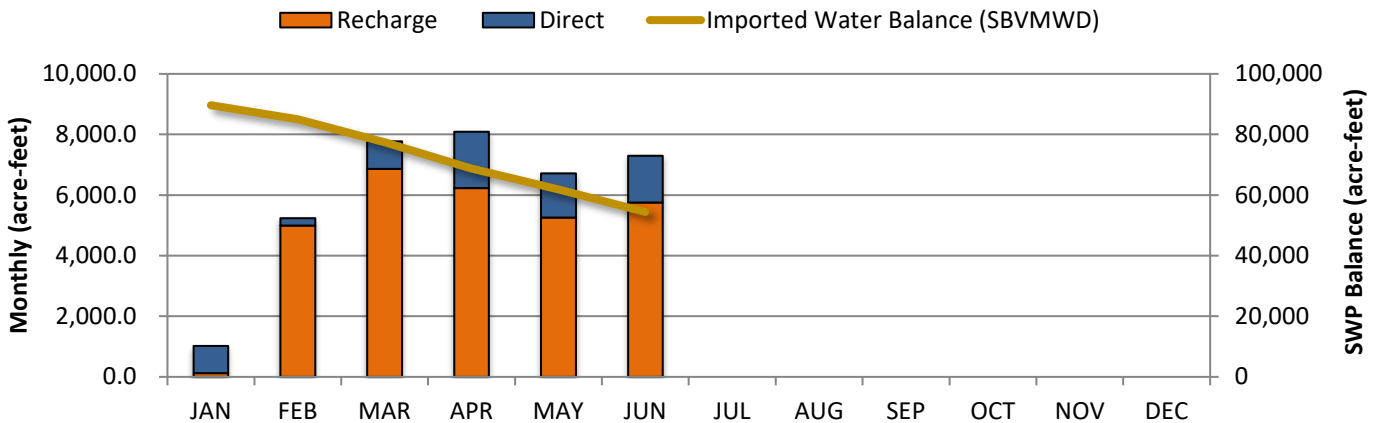
SBBA THREE STATION PRECIPITATION INDEX - MONTHLY

37.26 INCHES



2019 IMPORTED WATER SUPPLY PORTFOLIO BALANCE

54,417 AC-FT

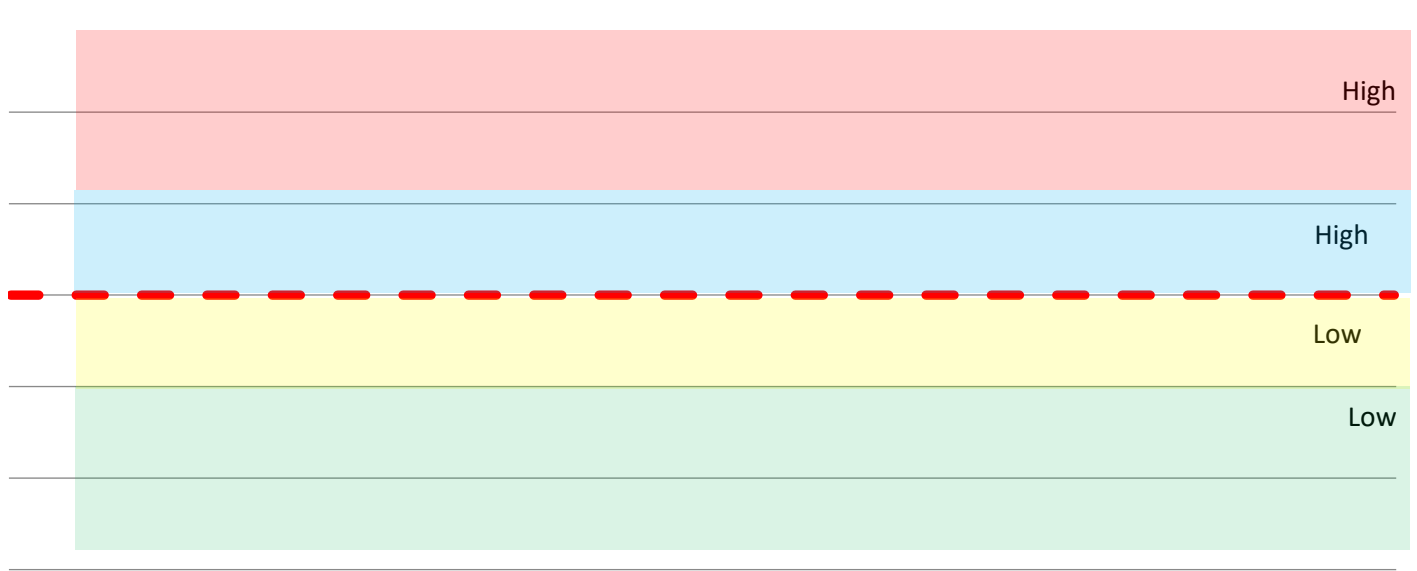


2019 Regional Water Management Plan

June

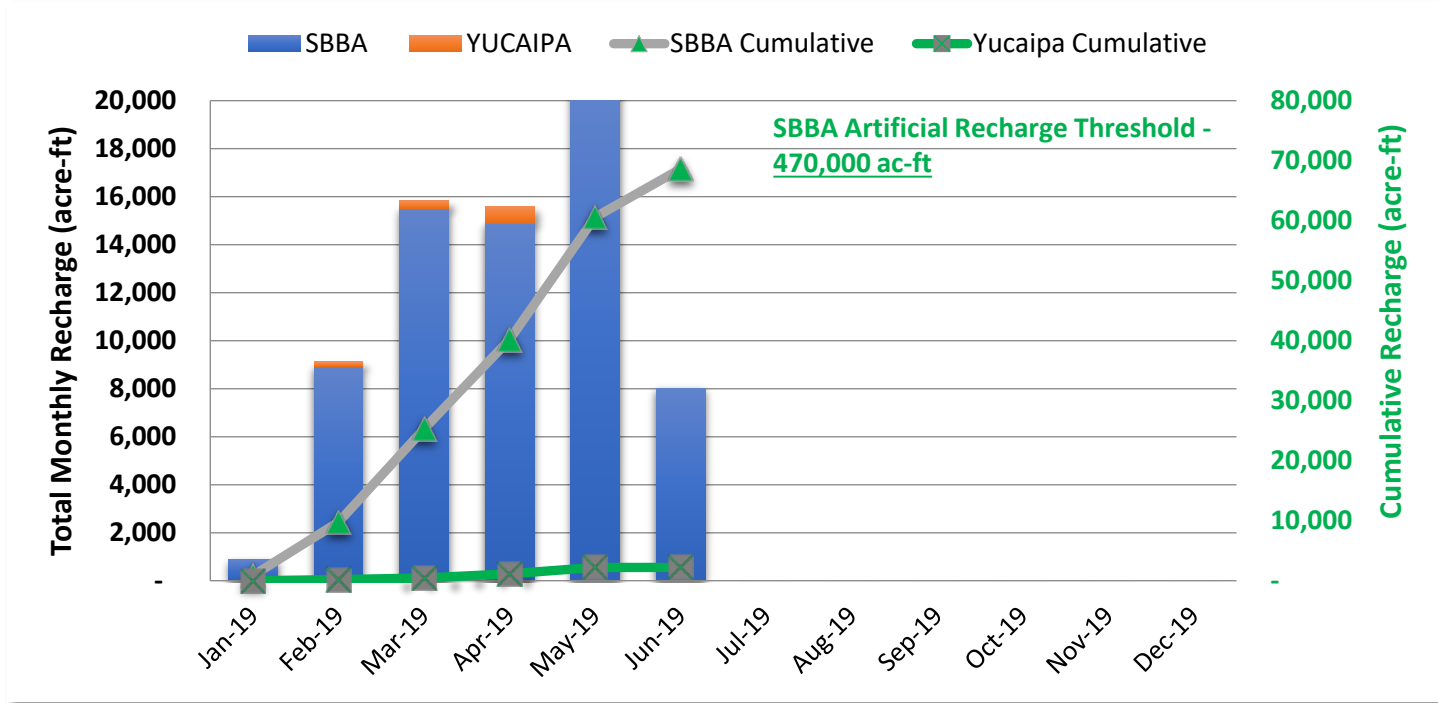
LIQUEFACTION POTENTIAL IN THE SBBA (Avg. Backyard Well, D4, D5 and D6)

Data Unavailable



ARTIFICIAL RECHARGE

70,092 AC-FT



2019 Regional Water Management Plan

June

WATER SUPPLY

	Jan 2019 to Dec 2019	Storage Program	June
SBVMWD/WMWD Santa Ana River Diversions in 2019:			
Direct delivery			
Artificial Recharge (17% required by Riverside Agreement unless credits)			100%
Exchange (long-term storage/banking, 40 cfs max)			
Additional San Bernardino Basin Area pumping:			
Imported Water Portfolio for 2019:			
Available:			
Article 21			981
Carryover to 2019			12,080
Entitlement for 2019 (75%)			76,950
Kern - Delta Water Bank (5,000 af/yr maximum)			0
Multi-year Demo			
Big Bear Lake (stored)		1,088	
Big Bear Lake (Delivered)			
Yuba Accord			784
Santa Clara Exchange			0
Palmdale Exchange			0
Dry year yield program			0
Purchase additional imported water			0
TOTAL SUPPLIES	-	1,088	90,795
Demands:			
Direct Deliveries			(6,898)
Recommended uses for State Water Project Water in 2019:			
Short-term (carryover) storage for direct deliveries			
Artificial Recharge			(29,231)
Facility Storage			475
Long-term storage/banking			
Sale to MWDC			
Palmdale Exchange (delivery to Palmdale)			
Sale to Crestline-Lake Arrowhead Water Agency		20	
Exchange to Crestline-Lake Arrowhead Water Agency			
Exchange to Santa Clara			
True up with DWR meters			(724)
TOTAL USE	0		(36,378)
BALANCE	-		54,417

ARTIFICIAL RECHARGE

	Artificial Recharge Jan 2019 - Dec 2019 (Suggested Max)	thru June			
		Local	SWP	Total	%
San Bernardino Basin Area¹					
1. Waterman Basins & 9. East Twin Creek Spreading Basin	135,125		10,738	10,738	8%
2. Santa Ana Basins	176,250	32,100	7,663	39,763	23%
3. Mill Creek Basins	105,750	8,761	7,179	15,940	15%
4. City of Redlands Spreading Basins	-			-	
5. Bear Valley Spreading Basin	-			-	
6. Santa Ana River Bottom	-			-	
7. Patton Basin	-			-	
8. EVWD Turnout	-			-	
10. Badger Basins	20,563			-	0%
11. Wiggins Basin	-			-	
12. Devil Canyon & Sweetwater Basins	32,313		1,440	1,440	4%
13. Gravel Pits	-			-	
14. Lower Lytle Creek Basins (proposed)	-			-	
Sub-total SBBA	470,000	40,861	27,020	67,881	14%

¹ Suggested maximum recharge values. See Appendix F.

² Due to shallow groundwater levels in this area, exceeding this value may result in rejected recharge at this location.

Rialto-Colton Basin				
Yucaipa Basin	3,500		2,211	2,211
Riverside North Basin				
SBVMWD Recharge in Riverside North (Watermaster Table No. 17C)	4,645			
Other	-			
Sub-Total R-C, Yucaipa, Riverside North			2,211	2,211

TOTAL RECHARGE THRU JUNE 2019

40,861

29,231

70,092